

Bohemian crystal glass

The line specialized hand cut crystal glass (contains over 24% PbO), characterized by an original rich decorative cut PK500, generated by the Czech Glass Cutting tradition.

In our catalogue you can find the following **Crystal Glassware**:

- Crystal Drinkware

- Crystal stemware

- Wine glasses
- Champagne flutes and champagne coupes
- Goblets
- Brandy snifters
- Beer glasses

- Crystal barware (tumblers)

- Highball glasses
- Old fashioned glasses
- Whiskey glasses
- Beer glasses
- Shot glasses

- Crystal Tableware

- Decanters
- Pitchers
- Bowls

- Crystal Giftware

- Bells

Prices for goods

All the prices stated on www.maximus.cz are in EUR€ and CZK (Czech crowns) and include packing charges. The prices of products on the pages www.maximus.cz are stated with V.A.T.

Customers from the countries of the European Union (E.U.) will pay the prices including the above stated tax (except companies with V.A.T.).

Other customers, who are not from the countries of the E.U. will pay the prices without that tax. They can save up more than 15% of the final price of goods.

Contact:

Maximus.cz

Michal Macek
Frostova 335
10900 Prague 10
Czech Republic

V.A.T. no. CZ7201190282

Liquer glass Laura - set PK500/02116/060

6 pieces
size: 60ml ~ 2 fl. oz.(US)
lead content: over 24% PbO
glass type: hand cut crystal stemware
cut type: PK500
weight per set: 1300g ~ 2,9lbs

Sherry glass Laura - set PK500/02116/090

6 pieces
size: 90ml ~ 3 3/8 fl. oz.(US)
lead content: over 24% PbO
glass type: hand cut crystal stemware
cut type: PK500
weight per set: 1400g ~ 3,1lbs

Liquer glass Laura - set PK500/02116/130

6 pieces
size: 130ml ~ 4 1/4 fl. oz.(US)
height: 170mm ~ 6 5/8"
lead content: over 24% PbO
glass type: hand cut crystal stemware
cut type: PK500
weight per set: 1600g ~ 3,5lbs

**Champagne flute glass Laura - set PK500/02116/150**

6 pieces
size: 150ml ~ 5 fl. oz.(US)
lead content: over 24% PbO
glass type: hand cut crystal stemware
cut type: PK500
weight per set: 2000g ~ 4,4lbs

**Wine glass Laura - set PK500/02116/170**

6 pieces
size: 170ml ~ 5 3/4 fl. oz.(US)
lead content: over 24% PbO
glass type: hand cut crystal stemware
cut type: PK500
weight per set: 2000g ~ 4,4lbs

**Champagne coupe glass Laura - set PK500/02116/180**

6 pieces
size: 180ml ~ 6 fl. oz.(US)
lead content: over 24% PbO
glass type: hand cut crystal stemware
cut type: PK500
weight per set: 2000g ~ 4,4lbs



Wine glass Laura - set PK500/02116/220

6 pieces
 size: 220ml ~ 6 3/4 fl. oz.(US)
 height: 185mm ~ 7 1/4"
 lead content: over 24% PbO
 glass type: hand cut crystal stemware
 cut type: PK500
 weight per set: 2200g ~ 4,9lbs



Wine glass Laura - set PK500/02116/280

6 pieces
 size: 280ml ~ 9 1/2 fl. oz.(US)
 height: 190mm ~ 7 1/2"
 lead content: over 24% PbO
 glass type: hand cut crystal stemware
 cut type: PK500
 weight per set: 2500g ~ 5,5lbs



Glass brandy - set PK500/10014/035

6 pieces
 size: 35ml ~ 1 1/4 fl. oz.(US)
 lead content: over 24% PbO
 glass type: hand cut crystal stemware
 cut type: PK500
 weight per set: 800g ~ 1,8lbs

Glass brandy - set PK500/10014/080

6 pieces
size: 80ml ~ 2 3/4 fl. oz.(US)
lead content: over 24% PbO
glass type: hand cut crystal stemware
cut type: PK500
weight per set: 1000g ~ 2,2lbs

**Glass brandy - set PK500/10014/105**

6 pieces
size: 105ml ~ 3 1/2 fl. oz.(US)
lead content: over 24% PbO
glass type: hand cut crystal stemware
cut type: PK500
weight per set: 1500g ~ 3,3lbs

**Glass brandy - set PK500/10014/135**

6 pieces
size: 135ml ~ 4 1/2 fl. oz.(US)
lead content: over 24% PbO
glass type: hand cut crystal stemware
cut type: PK500
weight per set: 1500g ~ 3,3lbs





Brandy snifter glass - set PK500/10014/170

6 pieces
 size: 170ml ~ 5 3/4 fl. oz.(US)
 lead content: over 24% PbO
 glass type: hand cut crystal stemware
 cut type: PK500
 weight per set: 1700g ~ 3,8lbs



Brandy snifter glass - set PK500/10014/230

6 pieces
 size: 230ml ~ 7 3/4 fl. oz.(US)
 lead content: over 24% PbO
 glass type: hand cut crystal stemware
 cut type: PK500
 weight per set: 2000g ~ 4,4lbs



Glass brandy - set PK500/10014/300

6 pieces
 size: 300ml ~ 10 1/8 fl. oz.(US)
 lead content: over 24% PbO
 glass type: hand cut crystal stemware
 cut type: PK500
 weight per set: 2200g ~ 4,9lbs



Glass brandy - set PK500/10014/420

6 pieces
 size: 420ml ~ 14 1/4 fl. oz.(US)
 lead content: over 24% PbO
 glass type: hand cut crystal stemware
 cut type: PK500
 weight per set: 3000g ~ 6,6lbs



Glass brandy - set PK500/10014/750

6 pieces
 size: 750ml ~ 25 3/8 fl. oz.(US)
 lead content: over 24% PbO
 glass type: hand cut crystal stemware
 cut type: PK500
 weight per set: 4800g ~ 10,6lbs



Liquor glass - set PK500/10157/025

6 pieces
 size: 25ml ~ 7/8 fl. oz.(US)
 lead content: over 24% PbO
 glass type: hand cut crystal stemware
 cut type: PK500
 weight per set: 500g ~ 1,1lbs



Sherry glass - set PK500/10157/050

6 pieces
 size: 50ml ~ 1 5/8 fl. oz.(US)
 lead content: over 24% PbO
 glass type: hand cut crystal stemware
 cut type: PK500
 weight per set: 900g ~ 2lbs



Sherry glass - set PK500/10157/065

6 pieces
 size: 65ml ~ 2 1/4 fl. oz.(US)
 lead content: over 24% PbO
 glass type: hand cut crystal stemware
 cut type: PK500
 weight per set: 900g ~ 2lbs



Sherry glass - set PK500/10157/070

6 pieces
 size: 70ml ~ 2 3/8 fl. oz.(US)
 lead content: over 24% PbO
 glass type: hand cut crystal stemware
 cut type: PK500
 weight per set: 700g ~ 1,6lbs



Sherry glass - set PK500/10157/090

6 pieces
 size: 90ml ~ 3 fl. oz.(US)
 lead content: over 24% PbO
 glass type: hand cut crystal stemware
 cut type: PK500
 weight per set: 1300g ~ 2,9lbs



Liquor glass - set PK500/10157/105

6 pieces
 size: 105ml ~ 3 1/2 fl. oz.(US)
 lead content: over 24% PbO
 glass type: hand cut crystal stemware
 cut type: PK500
 weight per set: 1500g ~ 3,3lbs



Liquor glass - set PK500/10157/130

6 pieces
 size: 130ml ~ 4 1/4 fl. oz.(US)
 lead content: over 24% PbO
 glass type: hand cut crystal stemware
 cut type: PK500
 weight per set: 1500g ~ 3,3lbs



Champagne flute glass - set PK500/10157/145

6 pieces
 size: 145ml ~ 5 3/4 fl. oz.(US)
 lead content: over 24% PbO
 glass type: hand cut crystal stemware
 cut type: PK500
 weight per set: 2000g ~ 4,4lbs



Liquor glass - set PK500/10157/150

6 pieces
 size: 150ml ~ 5 fl. oz.(US)
 lead content: over 24% PbO
 glass type: hand cut crystal stemware
 cut type: PK500
 weight per set: 2000g ~ 4,4lbs



Champagne coupe glass - set PK500/10157/170

6 pieces
 size: 170ml ~ 5 3/4 fl. oz.(US)
 lead content: over 24% PbO
 glass type: hand cut crystal stemware
 cut type: PK500
 weight per set: 2000g ~ 4,4lbs

**Wine glass - set PK500/10157/180**

6 pieces
size: 180ml ~ 6 fl. oz.(US)
lead content: over 24% PbO
glass type: hand cut crystal stemware
cut type: PK500
weight per set: 2000g ~ 4,4lbs

**Wine glass - set PK500/10157/220**

6 pieces
size: 220ml ~ 6 3/4 fl. oz.(US)
lead content: over 24% PbO
glass type: hand cut crystal stemware
cut type: PK500
weight per set: 2000g ~ 4,4lbs

**Beer glass - set PK500/10157/330**

6 pieces
size: 330ml ~ 11 1/8 fl. oz.(US)
lead content: over 24% PbO
glass type: hand cut crystal stemware
cut type: PK500
weight per set: 2500g ~ 5,5lbs

**Liquer glass - set PK500/10233/035**

6 pieces
 size: 35ml ~ 1 1/4 fl. oz.(US)
 lead content: over 24% PbO
 glass type: hand cut crystal stemware
 cut type: PK500
 weight per set: 700g ~ 1,6lbs

**Sherry glass - set PK500/10233/070**

6 pieces
 size: 70ml ~ 2 3/8 fl. oz.(US)
 lead content: over 24% PbO
 glass type: hand cut crystal stemware
 cut type: PK500
 weight per set: 900g ~ 2lbs

**Liquer glass - set PK500/10233/130**

6 pieces
 size: 130ml ~ 4 1/4 fl. oz.(US)
 lead content: over 24% PbO
 glass type: hand cut crystal stemware
 cut type: PK500
 weight per set: 1700g ~ 3,8lbs



Champagne flute glass - set PK500/10233/150

6 pieces
 size: 150ml ~ 5 fl. oz.(US)
 lead content: over 24% PbO
 glass type: hand cut crystal stemware
 cut type: PK500
 weight per set: 2000g ~ 4,4lbs



Liquor glass - set PK500/10233/170

6 pieces
 size: 170ml ~ 5 3/4 fl. oz.(US)
 lead content: over 24% PbO
 glass type: hand cut crystal stemware
 cut type: PK500
 weight per set: 2200g ~ 4,9lbs



Liquor glass - set PK500/10233/240

6 pieces
 size: 240ml ~ 8 1/8 fl. oz.(US)
 lead content: over 24% PbO
 glass type: hand cut crystal stemware
 cut type: PK500
 weight per set: 2400g ~ 5,3lbs



Glass "roman" - set PK500/11003/180

6 pieces
 size: 180ml ~ 6 fl. oz.(US)
 lead content: over 24% PbO
 glass type: hand cut crystal stemware
 cut type: PK500
 weight per set: 2500g ~ 5,5lbs



Liquer glass Adele - set PK500/12170/060

6 pieces
 size: 60ml ~ 2 fl. oz.(US)
 lead content: over 24% PbO
 glass type: hand cut crystal stemware
 cut type: PK500
 weight per set: 700g ~ 1,6lbs



Sherry glass Adele - set PK500/12170/090

6 pieces
 size: 90ml ~ 3 fl. oz.(US)
 lead content: over 24% PbO
 glass type: hand cut crystal stemware
 cut type: PK500
 weight per set: 900g ~ 2lbs



Champagne flute glass Adele - set PK500/12170/100

6 pieces
 size: 100ml ~ 3 3/8 fl. oz.(US)
 lead content: over 24% PbO
 glass type: hand cut crystal stemware
 cut type: PK500
 weight per set: 900g ~ 2lbs



Sherry glass Adele - set PK500/12170/150

6 pieces
 size: 150ml ~ 5 fl. oz.(US)
 lead content: over 24% PbO
 glass type: hand cut crystal stemware
 cut type: PK500
 weight per set: 1500g ~ 3,3lbs



Champagne flute glass Adele - set PK500/12170/160

6 pieces
 size: 160ml ~ 5 3/8 fl. oz.(US)
 lead content: over 24% PbO
 glass type: hand cut crystal stemware
 cut type: PK500
 weight per set: 1700g ~ 3,8lbs



Wine glass Adele - set PK500/12170/210

6 pieces
 size: 210ml ~ 7 fl. oz.(US)
 lead content: over 24% PbO
 glass type: hand cut crystal stemware
 cut type: PK500
 weight per set: 2000g ~ 4,4lbs



Champagne coupe glass Adele - set PK500/12170/230

6 pieces
 size: 230ml ~ 7 3/4 fl. oz.(US)
 lead content: over 24% PbO
 glass type: hand cut crystal stemware
 cut type: PK500
 weight per set: 2000g ~ 4,4lbs



Glass sekt bowl Adele - set PK500/12170/270

6 pieces
 size: 270ml ~ 9 1/8 fl. oz.(US)
 lead content: over 24% PbO
 glass type: hand cut crystal stemware
 cut type: PK500
 weight per set: 2000g ~ 4,4lbs



Beer glass Adele - set PK500/12170/330

6 pieces
 size: 330ml ~ 11 1/8 fl. oz.(US)
 lead content: over 24% PbO
 glass type: hand cut crystal stemware
 cut type: PK500
 weight per set: 2300g ~ 5,1lbs



Beer glass - set PK500/15042/500

6 pieces
 size: 500ml ~ 16 7/8 fl. oz.(US)
 lead content: over 24% PbO
 glass type: hand cut crystal stemware
 cut type: PK500
 weight per set: 4800g ~ 10,5lbs



Highball glass - set PK500/20001/350

6 pieces
 size: 350ml ~ 11 7/8 fl. oz.(US)
 height: 150mm ~ 5 7/8", diameter 65mm ~ 2 1/2"
 lead content: over 24% PbO
 glass type: hand cut crystal barware
 cut type: PK500
 weight per set: 2800g ~ 6,2lbs



Whiskey tumbler - set PK500/20006/200

6 pieces
 size: 200ml ~ 6 3/4 fl. oz.(US)
 lead content: over 24% PbO
 glass type: hand cut crystal barware
 cut type: PK500
 weight per set: 2500g ~ 5,5lbs



Whiskey tumbler - set PK500/20006/360

6 pieces
 size: 360ml ~ 12 1/8 fl. oz.(US)
 height: 85mm ~ 3 1/3", diameter 90mm ~ 3 1/2"
 lead content: over 24% PbO
 glass type: hand cut crystal barware
 cut type: PK500
 weight per set: 3000g ~ 6,6lbs



Whiskey tumbler - set PK500/20045/110

6 pieces
 size: 110ml ~ 3 3/4 fl. oz.(US)
 lead content: over 24% PbO
 glass type: hand cut crystal barware
 cut type: PK500
 weight per set: 1500g ~ 3,3lbs



Whiskey tumbler - set PK500/20045/170

6 pieces
 size: 170ml ~ 5 3/4 fl. oz.(US)
 lead content: over 24% PbO
 glass type: hand cut crystal barware
 cut type: PK500
 weight per set: 1700g ~ 3,3lbs



Highball glass - set PK500/20045/220

6 pieces
 size: 220ml ~ 6 3/4 fl. oz.(US)
 lead content: over 24% PbO
 glass type: hand cut crystal barware
 cut type: PK500
 weight per set: 2000g ~ 4,4lbs



Highball glass - set PK500/20045/320

6 pieces
 size: 320ml ~ 10 3/4 fl. oz.(US)
 lead content: over 24% PbO
 glass type: hand cut crystal barware
 cut type: PK500
 weight per set: 2500g ~ 5,5lbs



Whiskey glass - set PK500/20260/320

6 pieces
 size: 320ml ~ 10 3/4 fl. oz.(US)
 lead content: over 24% PbO
 glass type: hand cut crystal barware
 cut type: PK500
 weight per set: 3000g ~ 6,6lbs



Whiskey glass - set PK500/20727/240

6 pieces
 size: 240ml ~ 8 1/8 fl. oz.(US)
 lead content: over 24% PbO
 glass type: hand cut crystal barware
 cut type: PK500
 weight per set: 1700g ~ 3,8lbs



Whiskey glass - set PK500/20052/340

6 pieces
 size: 340ml ~ 8 1/8 fl. oz.(US)
 lead content: over 24% PbO
 glass type: hand cut crystal barware
 cut type: PK500
 weight per set: 2600g ~ 5,7lbs



Whiskey glass - set PK500/22073/340

6 pieces
 size: 340ml ~ 8 1/8 fl. oz.(US)
 lead content: over 24% PbO
 glass type: hand cut crystal barware
 cut type: PK500
 weight per set: 2600g ~ 5,7lbs



Liquor glass - set PK500/20258/045

6 pieces
 size: 45ml ~ 1 1/2 fl. oz.(US)
 lead content: over 24% PbO
 glass type: hand cut crystal barware
 cut type: PK500
 weight per set: 1000g ~ 2,2lbs



Liquor glass - set PK500/20320/080

6 pieces
 size: 80ml ~ 2 3/4 fl. oz.(US)
 lead content: over 24% PbO
 glass type: hand cut crystal barware
 cut type: PK500
 weight per set: 1500g ~ 3,3lbs



Liquer glass - set PK500/22087/140

6 pieces
 size: 140ml ~ 4 3/4 fl. oz.(US)
 lead content: over 24% PbO
 glass type: hand cut crystal barware
 cut type: PK500
 weight per set: 1500g ~ 3,3lbs



Bottle PK500/40030/016

1 piece
 size: 160ml ~ 5 3/8 fl. oz.(US)
 lead content: over 24% PbO
 glass type: hand cut crystal drinkware
 cut type: PK500
 weight: 600g ~ 1,4lbs



Bottle PK500/40094/047

1 piece
 size: 470ml ~ 15 7/8 fl. oz.(US)
 lead content: over 24% PbO
 glass type: hand cut crystal drinkware
 cut type: PK500
 weight: 1500g ~ 3,3lbs

**Bottle PK500/40094/085**

1 piece
 size: 850ml ~ 28 3/4 fl. oz.(US)
 lead content: over 24% PbO
 glass type: hand cut crystal drinkware
 cut type: PK500
 weight: 2000g ~ 4,4lbs

**Bottle PK500/40125/055**

1 piece
 size: 550ml ~ 18 1/2 fl. oz.(US)
 lead content: over 24% PbO
 glass type: hand cut crystal drinkware
 cut type: PK500
 weight: 1500g ~ 3,3lbs

**Bottle PK500/40138/100**

1 piece
 size: 1000ml ~ 33 3/4 fl. oz.(US)
 lead content: over 24% PbO
 glass type: hand cut crystal drinkware
 cut type: PK500
 weight: 2500g ~ 5,6lbs

**Bottle PK500/40147/070**

1 piece
 size: 700ml ~ 23 5/8 fl. oz.(US)
 lead content: over 24% PbO
 glass type: hand cut crystal drinkware
 cut type: PK500
 weight: 1900g ~ 4,2lbs

**Bottle PK500/40194/090**

1 piece
 size: 900ml ~ 30 3/8 fl. oz.(US)
 lead content: over 24% PbO
 glass type: hand cut crystal drinkware
 cut type: PK500
 weight: 2300g ~ 5,1lbs

**Bottle PK500/40239/043**

1 piece
 size: 430ml ~ 14 1/2 fl. oz.(US)
 lead content: over 24% PbO
 glass type: hand cut crystal drinkware
 cut type: PK500
 weight: 1500g ~ 3,3lbs

**Bottle PK500/40265/090**

1 piece
 size: 900ml ~ 30 3/8 fl. oz.(US)
 lead content: over 24% PbO
 glass type: hand cut crystal drinkware
 cut type: PK500
 weight: 2500g ~ 5,6lbs

**Bottle PK500/40353/008**

1 piece
 size: 80ml ~ 2 3/4 fl. oz.(US)
 lead content: over 24% PbO
 glass type: hand cut crystal drinkware
 cut type: PK500
 weight: 500g ~ 1,1lbs

**Bottle PK500/40354/075**

1 piece
 size: 750ml ~ 25 3/8 fl. oz.(US)
 lead content: over 24% PbO
 glass type: hand cut crystal drinkware
 cut type: PK500
 weight: 2500g ~ 5,6lbs

**Bottle PK500/40402/075**

1 piece
 size: 750ml ~ 25 3/8 fl. oz.(US)
 lead content: over 24% PbO
 glass type: hand cut crystal drinkware
 cut type: PK500
 weight: 2500g ~ 5,6lbs

**Bottle PK500/40435/090**

1 piece
 size: 900ml ~ 30 3/8 fl. oz.(US)
 lead content: over 24% PbO
 glass type: hand cut crystal drinkware
 cut type: PK500
 weight: 2500g ~ 5,6lbs

**Bottle PK500/40531/100**

1 piece
 size: 1000ml ~ 33 3/4 fl. oz.(US)
 lead content: over 24% PbO
 glass type: hand cut crystal drinkware
 cut type: PK500
 weight: 2300g ~ 5,1lbs

**Bottle PK500/40540/060**

1 piece
 size: 600ml ~ 20 1/4 fl. oz.(US)
 lead content: over 24% PbO
 glass type: hand cut crystal drinkware
 cut type: PK500
 weight: 2300g ~ 5,1lbs

**Bottle PK500/40542/050**

1 piece
 size: 500ml ~ 16 7/8 fl. oz.(US)
 lead content: over 24% PbO
 glass type: hand cut crystal drinkware
 cut type: PK500
 weight: 2200g ~ 4,9lbs

**Bottle PK500/40545/055**

1 piece
 size: 500ml ~ 16 7/8 fl. oz.(US)
 lead content: over 24% PbO
 glass type: hand cut crystal drinkware
 cut type: PK500
 weight: 2500g ~ 5,6lbs

**Bottle PK500/40626/100**

1 piece
 size: 1000ml ~ 33 3/4 fl. oz.(US)
 lead content: over 24% PbO
 glass type: hand cut crystal drinkware
 cut type: PK500
 weight: 2000g ~ 4,4lbs

**Bottle PK500/40705/100**

1 piece
 size: 1000ml ~ 33 3/4 fl. oz.(US)
 lead content: over 24% PbO
 glass type: hand cut crystal drinkware
 cut type: PK500
 weight: 2200g ~ 4,9lbs

**Bottle PK500/41034/060**

1 piece
 size: 600ml ~ 20 1/4 fl. oz.(US)
 lead content: over 24% PbO
 glass type: hand cut crystal drinkware
 cut type: PK500
 weight: 3000g ~ 6,6lbs

**Bottle PK500/41035/050**

1 piece
size: 500ml ~ 16 7/8 fl. oz.(US)
lead content: over 24% PbO
glass type: hand cut crystal drinkware
cut type: PK500
weight: 2700g ~ 6lbs

**Bottle PK500/41041/060**

1 piece
size: 600ml ~ 20 1/4 fl. oz.(US)
lead content: over 24% PbO
glass type: hand cut crystal drinkware
cut type: PK500
weight: 3000g ~ 6,6lbs

**Bottle PK500/41050/060**

1 piece
size: 600ml ~ 20 1/4 fl. oz.(US)
lead content: over 24% PbO
glass type: hand cut crystal drinkware
cut type: PK500
weight: 2000g ~ 4,4lbs

**Bottle PK500/41081/055**

1 piece
 size: 550ml ~ 20 1/4 fl. oz.(US)
 lead content: over 24% PbO
 glass type: hand cut crystal drinkware
 cut type: PK500
 weight: 2000g ~ 4,4lbs

**Bottle PK500/41081/080**

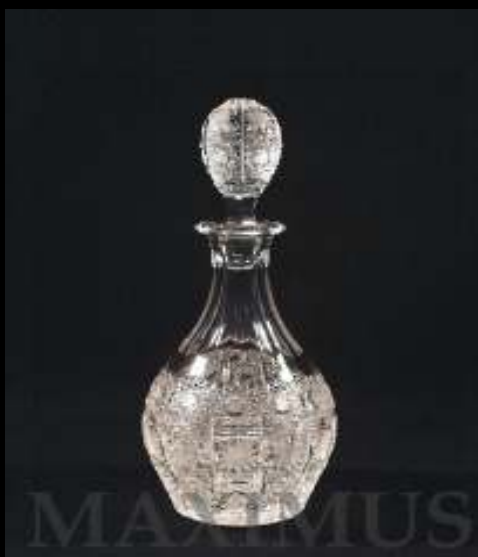
1 piece
 size: 800ml ~ 27 fl. oz.(US)
 height: 250mm ~ 9 3/4", base 100 x 100mm ~ 4" x 4"
 lead content: over 24% PbO
 glass type: hand cut crystal drinkware
 cut type: PK500
 weight: 2500g ~ 5,6lbs

**Bottle PK500/42055/010**

1 piece
 size: 100ml ~ 3 3/8 fl. oz.(US)
 lead content: over 24% PbO
 glass type: hand cut crystal drinkware
 cut type: PK500
 weight: 500g ~ 1,1lbs

**Bottle PK500/42055/025**

1 piece
size: 250ml ~ 8 1/2 fl. oz.(US)
lead content: over 24% PbO
glass type: hand cut crystal drinkware
cut type: PK500
weight: 700g ~ 1,6lbs

**Bottle PK500/42055/055**

1 piece
size: 250ml ~ 8 1/2 fl. oz.(US)
lead content: over 24% PbO
glass type: hand cut crystal drinkware
cut type: PK500
weight: 1500g ~ 3,3lbs

**Bottle PK500/42055/095**

1 piece
size: 950ml ~ 32 1/8 fl. oz.(US)
lead content: over 24% PbO
glass type: hand cut crystal drinkware
cut type: PK500
weight: 2000g ~ 4,4lbs

**Bottle PK500/42055/125**

1 piece
 size: 1250ml ~ 42 1/4 fl. oz.(US)
 lead content: over 24% PbO
 glass type: hand cut crystal drinkware
 cut type: PK500
 weight: 2300g ~ 5,1lbs

**Glass PK500/23012/500**

1 piece
 size: 500ml ~ 16 7/8 fl. oz.(US)
 lead content: over 24% PbO
 glass type: hand cut crystal drinkware
 cut type: PK500
 weight: 1500g ~ 3,3lbs

**Glass PK500/23035/340**

1 piece
 size: 340ml ~ 8 1/5 fl. oz.(US)
 lead content: over 24% PbO
 glass type: hand cut crystal drinkware
 cut type: PK500
 weight: 1000g ~ 2,2lbs

**Glass PK500/23035/500**

1 piece
 size: 500ml ~ 16 7/8 fl. oz.(US)
 lead content: over 24% PbO
 glass type: hand cut crystal drinkware
 cut type: PK500
 weight: 1200g ~ 2,7lbs

**Glass PK500/23043/600**

1 piece
 size: 600ml ~ 20 1/4 fl. oz.(US)
 lead content: over 24% PbO
 glass type: hand cut crystal drinkware
 cut type: PK500
 weight: 1000g ~ 2,2lbs

**Glass PK500/23070/500**

1 piece
 size: 500ml ~ 16 7/8 fl. oz.(US)
 lead content: over 24% PbO
 glass type: hand cut crystal drinkware
 cut type: PK500
 weight: 1000g ~ 2,2lbs

**Glass PK500/23071/060**

1 piece
size: 60ml ~ 2 fl. oz.(US)
lead content: over 24% PbO
glass type: hand cut crystal drinkware
cut type: PK500
weight: 250g ~ 0,6lb

**Glass PK500/23077/380**

1 piece
size: 380ml ~ 12 7/8 fl. oz.(US)
lead content: over 24% PbO
glass type: hand cut crystal drinkware
cut type: PK500
weight: 1000g ~ 2,2lbs

**Jug PK500/30003/012**

1 piece
size: 120ml ~ 4 fl. oz.(US)
lead content: over 24% PbO
glass type: hand cut crystal drinkware
cut type: PK500
weight: 350g ~ 0,7lb

**Jug PK500/30007/021**

1 piece
 size: 210ml ~ 7 fl. oz.(US)
 lead content: over 24% PbO
 glass type: hand cut crystal drinkware
 cut type: PK500
 weight: 500g ~ 1,1lb

**Jug PK500/30022/145**

1 piece
 size: 1450ml ~ 49 fl. oz.(US)
 height 230mm ~ 9"
 lead content: over 24% PbO
 glass type: hand cut crystal drinkware
 cut type: PK500
 weight. 3300g ~ 7,3lbs

**Jug PK500/30057/010**

1 piece
 size: 100ml ~ 3 3/8 fl. oz.(US)
 lead content: over 24% PbO
 glass type: hand cut crystal drinkware
 cut type: PK500
 weight: 400g ~ 0,9lbs

**Jug PK500/30067/005**

1 piece
 size: 50ml ~ 1 3/4 fl. oz.(US)
 lead content: over 24% PbO
 glass type: hand cut crystal drinkware
 cut type: PK500
 weight: 300g ~ 0,7lbs

**Jug PK500/30139/050**

1 piece
 size: 500ml ~ 16 7/8 fl. oz.(US)
 lead content: over 24% PbO
 glass type: hand cut crystal drinkware
 cut type: PK500
 weight: 1000g ~ 2,2lbs

**Jug PK500/30178/008**

1 piece
 size: 80ml ~ 2 3/4 fl. oz.(US)
 lead content: over 24% PbO
 glass type: hand cut crystal drinkware
 cut type: PK500
 weight: 250g ~ 0,6lbs

**Jug PK500/30180/008**

1 piece
 size: 80ml ~ 2 3/4 fl. oz.(US)
 lead content: over 24% PbO
 glass type: hand cut crystal drinkware
 cut type: PK500
 weight: 250g ~ 0,6lbs

**Jug PK500/31026/010**

1 piece
 size: 100ml ~ 3 3/8 fl. oz.(US)
 lead content: over 24% PbO
 glass type: hand cut crystal drinkware
 cut type: PK500
 weight: 500g ~ 1,1lbs

**Jug PK500/31026/060**

1 piece
 size: 600ml ~ 20 1/4 fl. oz.(US)
 lead content: over 24% PbO
 glass type: hand cut crystal drinkware
 cut type: PK500
 weight: 1800g ~ 4lbs

**Jug PK500/31040/060**

1 piece
 size: 600ml ~ 20 1/4 fl. oz.(US)
 lead content: over 24% PbO
 glass type: hand cut crystal drinkware
 cut type: PK500
 weight: 1500g ~ 3,3lbs

**Jug PK500/31151/011**

1 piece
 size: 110ml ~ 3 5/8 fl. oz.(US)
 lead content: over 24% PbO
 glass type: hand cut crystal drinkware
 cut type: PK500
 weight: 500g ~ 1,1lbs

**Jug PK500/31163/130**

1 piece
 size: 1300ml ~ 44 fl. oz.(US)
 lead content: over 24% PbO
 glass type: hand cut crystal drinkware
 cut type: PK500
 weight: 3300g ~ 7,3lbs

**Jug PK500/31182/008**

1 piece
 size: 80ml ~ 2 3/4 fl. oz.(US)
 lead content: over 24% PbO
 glass type: hand cut crystal drinkware
 cut type: PK500
 weight: 300g ~ 0,7lbs

**Jug PK500/31185/031**

1 piece
 size: 310ml ~ 10 1/2 fl. oz.(US)
 lead content: over 24% PbO
 glass type: hand cut crystal drinkware
 cut type: PK500
 weight: 700g ~ 1,6lbs

**Jug PK500/31185/060**

1 piece
 size: 600ml ~ 20 1/4 fl. oz.(US)
 height: 185mm ~ 7 1/3"
 lead content: over 24% PbO
 glass type: hand cut crystal drinkware
 cut type: PK500
 weight: 1500g ~ 3,3lbs

**Jug PK500/31185/090**

1 piece
 size: 900ml ~ 30 3/4 fl. oz.(US)
 lead content: over 24% PbO
 glass type: hand cut crystal drinkware
 cut type: PK500
 weight: 1600g ~ 3,6lbs

**Jug PK500/31185/130**

1 piece
 size: 1300ml ~ 44 fl. oz.(US)
 lead content: over 24% PbO
 glass type: hand cut crystal drinkware
 cut type: PK500
 weight: 2400g ~ 5,3lbs

**Jug PK500/31255/100**

1 piece
 size: 1000ml ~ 33 3/4 fl. oz.(US)
 lead content: over 24% PbO
 glass type: hand cut crystal drinkware
 cut type: PK500
 weight: 2400g ~ 5,3lbs

Jug PK500/34019/014

1 piece
 size: 140ml ~ 4 3/4 fl. oz.(US)
 lead content: over 24% PbO
 glass type: hand cut crystal tableware
 cut type: PK500
 weight: 1600g ~ 3,6lbs

**Bowl swan PK500/35017/080**

1 piece
 size: diameter 80mm ~ 3 1/8"
 lead content: over 24% PbO
 glass type: hand cut crystal tableware
 cut type: PK500
 weight: 400g ~ 0,8lbs

**Bowl swan PK500/35017/116**

1 piece
 size: diameter 116mm ~ 4 5/8"
 lead content: over 24% PbO
 glass type: hand cut crystal tableware
 cut type: PK500
 weight: 800g ~ 1,8lbs



Bowl swan PK500/35018/114

1 piece
 size: diameter 114mm ~ 4 1/4"
 lead content: over 24% PbO
 glass type: hand cut crystal tableware
 cut type: PK500
 weight: 600g ~ 1,4lbs

**Bowl swan PK500/35023/008**

1 piece
 size: diameter 80mm ~ 3 1/8"
 lead content: over 24% PbO
 glass type: hand cut crystal tableware
 cut type: PK500
 weight: 300g ~ 0,6lbs

**Bowl swan PK500/35024/130**

1 piece
 size: diameter 130mm ~ 3 1/4"
 lead content: over 24% PbO
 glass type: hand cut crystal tableware
 cut type: PK500
 weight :800g ~ 1,8lbs



**Basket PK500/36020/062**

1 piece
 diameter 62mm ~ 2 1/2"
 lead content: over 24% PbO
 glass type: hand cut crystal tableware
 cut type: PK500
 weight 300g ~ 0,6lbs

**Basket PK500/36020/098**

1 piece
 size: diameter 98mm ~ 3 3/4"
 lead content: over 24% PbO
 glass type: hand cut crystal tableware
 cut type: PK500
 weight: 300g ~ 0,6lbs

**Basket PK500/36020/116**

1 piece
 size: diameter 116mm ~ 4 1/2"
 lead content: over 24% PbO
 glass type: hand cut crystal tableware
 cut type: PK500
 weight: 500g ~ 1,1lbs

**Basket PK500/36020/126**

1 piece
 size: diameter 126mm ~ 5"
 lead content: over 24% PbO
 glass type: hand cut crystal tableware
 cut type: PK500
 weight: 700g ~ 1,6lbs

**Bell PK500/17010/126**

1 piece
 size: height 126mm ~ 4 7/8"
 lead content: over 24% PbO
 glass type: hand cut crystal giftware
 cut type: PK500
 weight: 200g ~ 0,5lbs

**Bell PK500/17016/155**

1 piece
 size: height 155mm ~ 6"
 lead content: over 24% PbO
 glass type: hand cut crystal giftware
 cut type: PK500
 weight: 300g ~ 0,6lbs

**Bell PK500/17054/124**

1 piece
 size: height 124mm ~ 4 7/8"
 lead content: over 24% PbO
 glass type: hand cut crystal giftware
 cut type: PK500
 weight: 350g ~ 0,8lbs

**Bell PK500/17058/155**

1 piece
 size: height 155mm ~ 6"
 lead content: over 24% PbO
 glass type: hand cut crystal giftware
 cut type: PK500
 weight: 300g ~ 0,6lbs

**Bell PK500/17086/128**

1 piece
 size: height 128mm ~ 5"
 lead content: over 24% PbO
 glass type: hand cut crystal giftware
 cut type: PK500
 weight: 250g ~ 0,6lbs

**Bell PK500/17089/080**

1 piece
size: height 80mm ~ 3 1/8"
lead content: over 24% PbO
glass type: hand cut crystal giftware
cut type: PK500
weight: 150g ~ 0,3lbs

**Bell PK500/17094/096**

1 piece
size: height 96mm ~ 3 3/4"
lead content: over 24% PbO
glass type: hand cut crystal giftware
cut type: PK500
weight: 150g ~ 0,3lbs